

**FILCO** SHIPPING CONTAINERS

**TYPE 1A 20' GP DIMENSIONS**

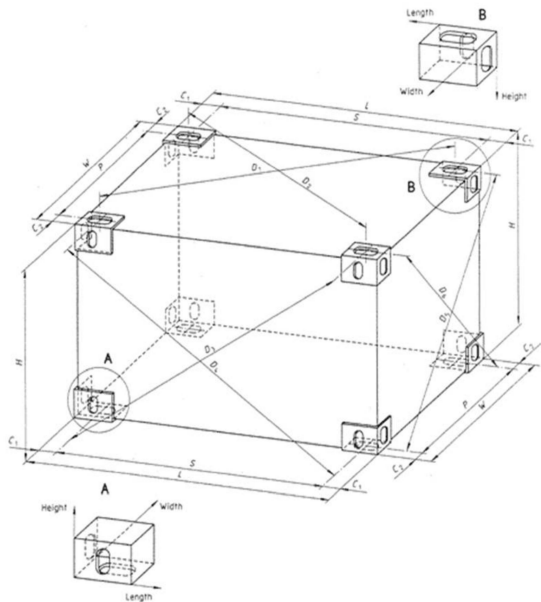
**FILCO SHIPPING CONTAINERS**

TECHNICAL DRAWING SERIES 2011

REVISIONS

NO.	DATE	REVISIONS
1		NOT FOR CONSTRUCTION
2		
3		
4		
5		





**FILCO** SHIPPING CONTAINERS

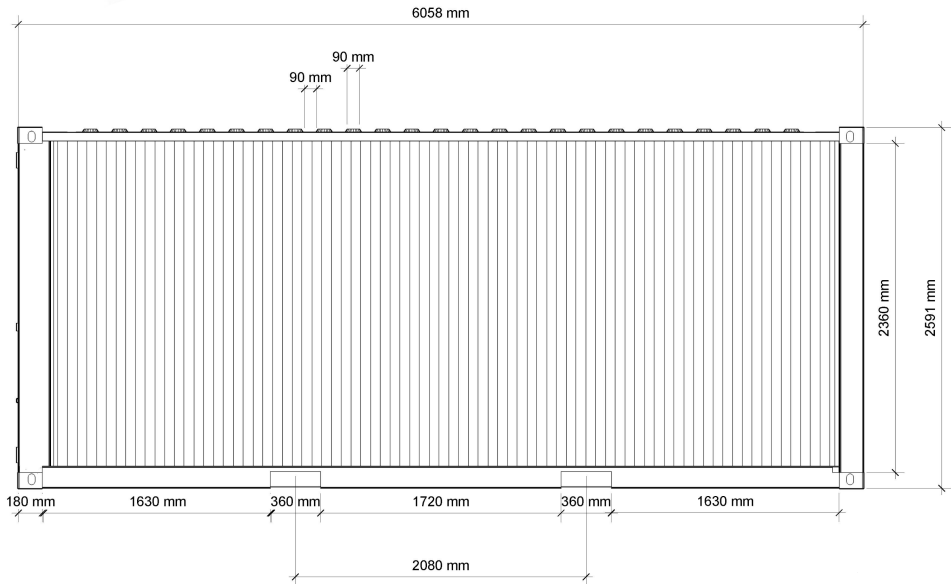
**TYPE 1A OVERALL DIMENSION**

**FILCO SHIPPING CONTAINERS**

TECHNICAL DRAWING SERIES 2011

REVISIONS

MM/00/YY	REMARKS
1	
2	NOT FOR CONSTRUCTION
3	
4	
5	



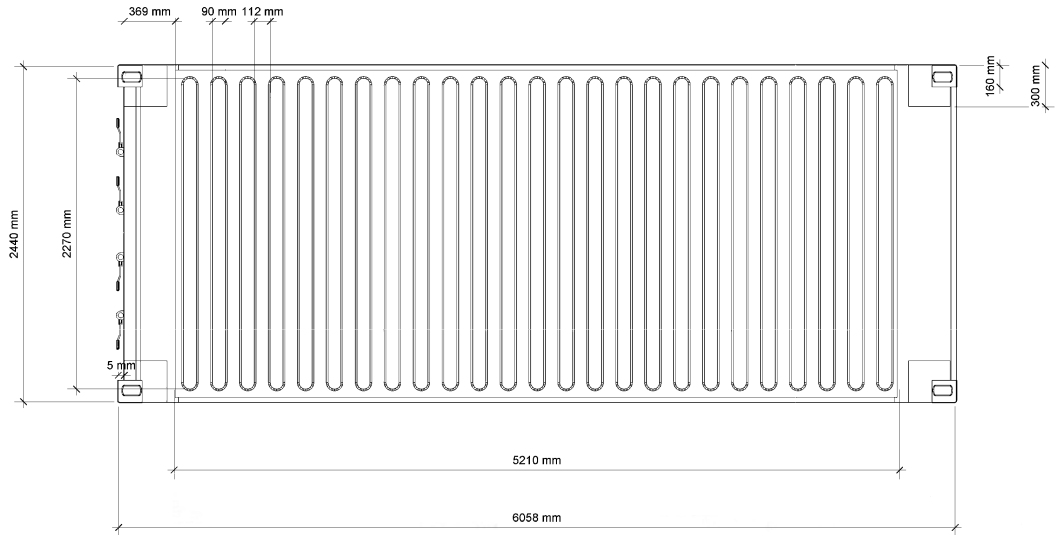
**TYPE 1A 20' GP SIDEWALL**

**FILCO SHIPPING CONTAINERS**

TECHNICAL DRAWING SERIES 2011

REVISIONS

MM/DD/YY	REMARKS
1	
2	<b>NOT FOR CONSTRUCTION</b>
3	
4	
5	



**TYPE 1A 20' GP ROOF**

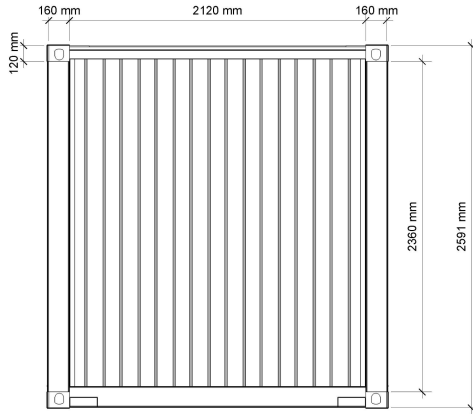
**FILCO SHIPPING CONTAINERS**

TECHNICAL DRAWING SERIES 2011

REVISIONS

NO.	DATE	REMARKS
1		
2		NOT FOR CONSTRUCTION
3		
4		
5		





**FILCO** SHIPPING CONTAINERS

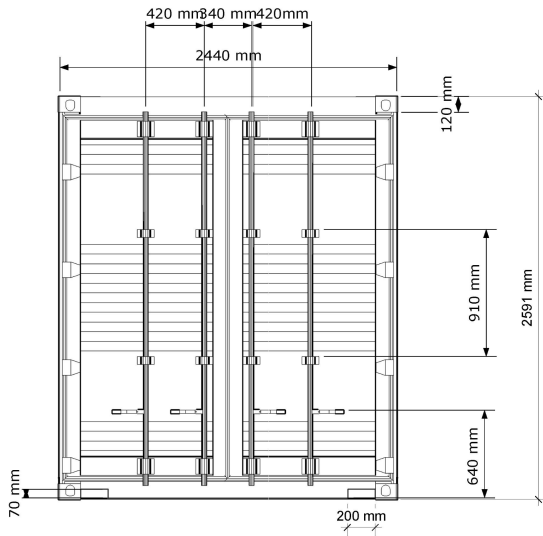
**TYPE 1A 20' GP END WALL**

**FILCO SHIPPING CONTAINERS**

TECHNICAL DRAWING SERIES 2011

REVISORS

MM/DD/YY	REMARKS
1	
2	
3	NOT FOR CONSTRUCTION
4	
5	



**FILCO** SHIPPING CONTAINERS

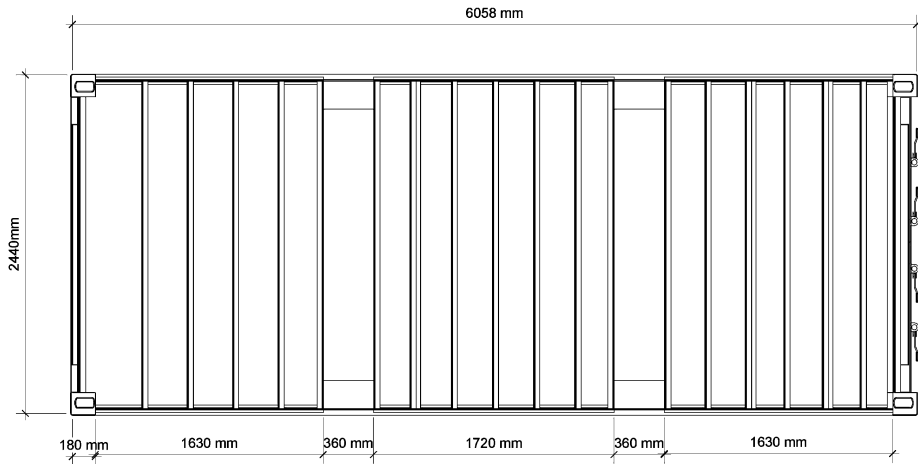
**TYPE 1A 20' GP DOOR END**

**FILCO SHIPPING CONTAINERS**

TECHNICAL DRAWING SERIES 2011

REVISIONS

NO.	MM/DD/YY	REMARKS
1		
2		NOT FOR CONSTRUCTION
3		
4		
5		



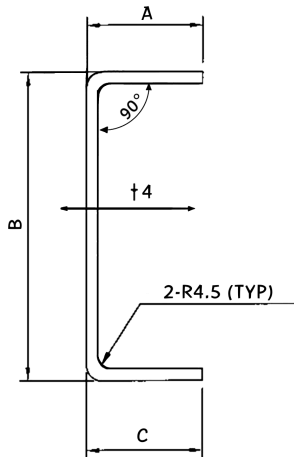
**TYPE 1A 20' GP UNDERFLOOR**

**FILCO SHIPPING CONTAINERS**

TECHNICAL DRAWING SERIES 2011

REVISIONS

NO.	MM/DD/YY	REMARKS
1		
2		
3		NOT FOR CONSTRUCTION
4		
5		



## Bottom Side Rail

Each bottom side rail runs the full length of the container and is manufactured from one piece of 4.5 mm pressed steel.

The bottom flanges of the side rails face outwards so as to be easily repaired if they get damaged and making it harder for them to corrode.

**FILCO** SHIPPING CONTAINERS

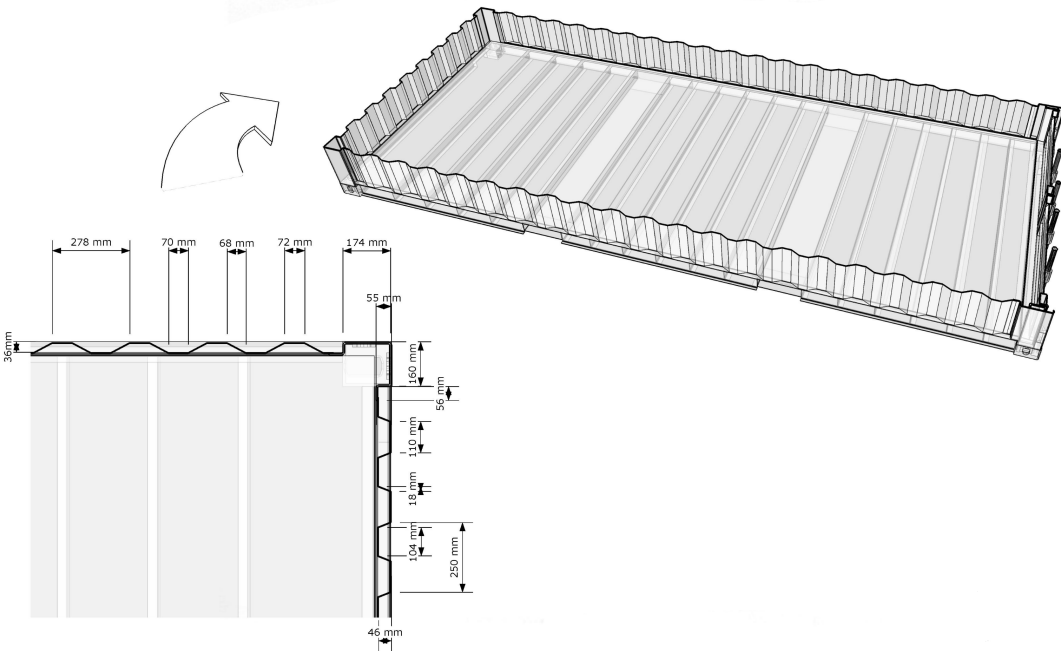
TYPE 1A BOTTOM SIDE RAIL

FILCO SHIPPING CONTAINERS

TECHNICAL DRAWING SERIES 2011

REVISIONS

NO	DATE	REMARKS
1		
2		NOT FOR CONSTRUCTION
3		
4		
5		



**FILCO** SHIPPING CONTAINERS

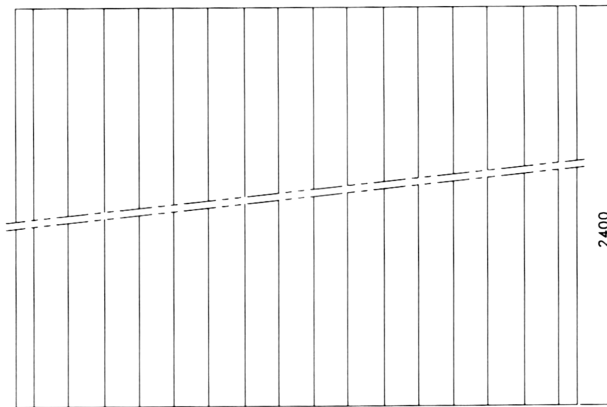
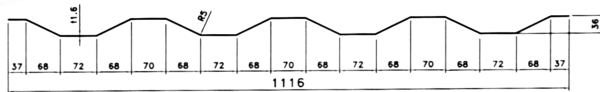
**TYPE 1A 20' GP WALL SECTION**

**FILCO SHIPPING CONTAINERS**

TECHNICAL DRAWING SERIES 2011

REVISIONS

NO.	MM/DD/YY	REMARKS
1		
2		NOT FOR CONSTRUCTION
3		
4		
5		



**FILCO** SHIPPING CONTAINERS

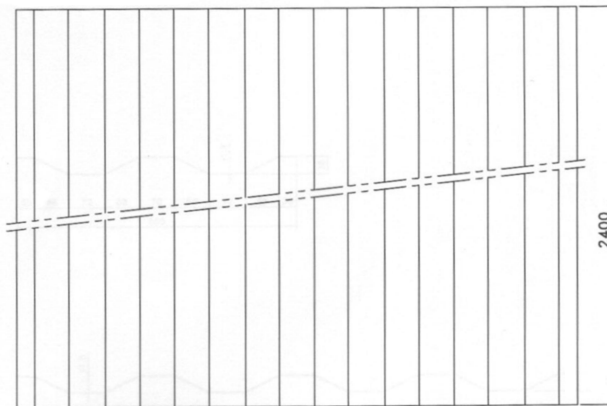
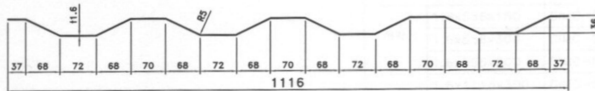
**TYPE 1A SIDE WALL PANELS**

**FILCO SHIPPING CONTAINERS**

TECHNICAL DRAWING SERIES 2011

REVISIONS

NO.	MM/CO/YY	REMARKS
1		
2		
3		NOT FOR CONSTRUCTION
4		
5		



**FILCO** SHIPPING CONTAINERS

**TYPE 1A REAR END WALL**

**FILCO SHIPPING CONTAINERS**

TECHNICAL DRAWING SERIES 2011

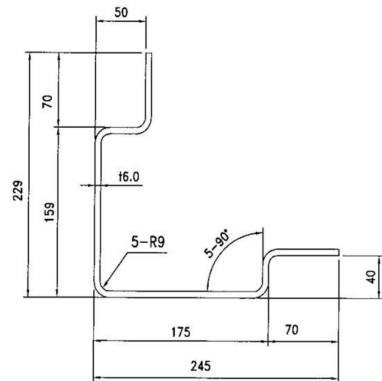
REVISIONS

MM/DD/YY	REMARKS
1	
2	
3	
4	
5	

**NOT FOR CONSTRUCTION**



## Rear Corner Post



**FILCO** SHIPPING CONTAINERS

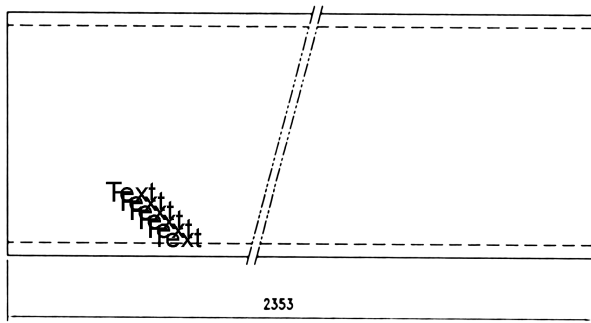
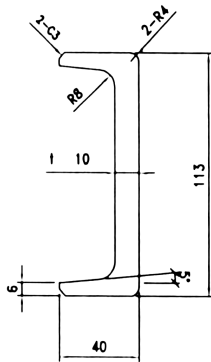
TYPE 1A REAR CORNER POST

FILCO SHIPPING CONTAINERS

TECHNICAL DRAWING SERIES 2011

		REVISIONS
NO.	MM/DD/YY	REMARKS
1		
2		NOT FOR CONSTRUCTION
3		
4		
5		





**FILCO** SHIPPING CONTAINERS

REAR CORNER POST INNER

FILCO SHIPPING CONTAINERS

TECHNICAL DRAWING SERIES 2011

REVISIONS

1	DATE	REMARKS
2		
3		
4		
5		

NOT FOR CONSTRUCTION



## Container Floors

### Plywood Sheets

**Size: 1220 x 2440 x 28 mm**

**Number of Plies: Minimum 19 plies**

**Plywood material: Apitong / Hardwood**

**Screws: M8 x 45 x  $\Phi$ 16 electro zinc plated**

**FILCO** SHIPPING CONTAINERS

CONTAINER FLOOR SHEETS

FILCO SHIPPING CONTAINERS

TECHNICAL DRAWING SERIES 2011

REVISIONS	
MM/DD/YY	REMARKS
1	
2	NOT FOR CONSTRUCTION
3	
4	
5	