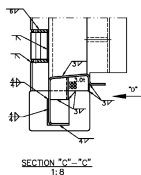
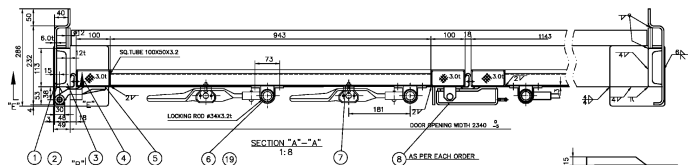


FILCO FOR CONSTRUCTION

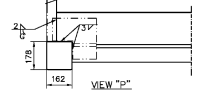
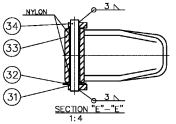
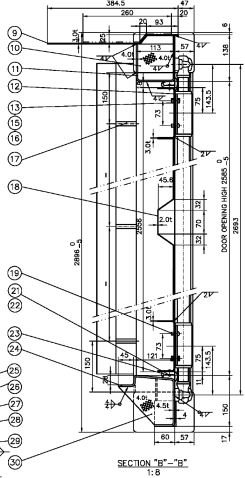
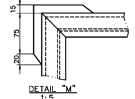
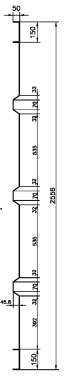
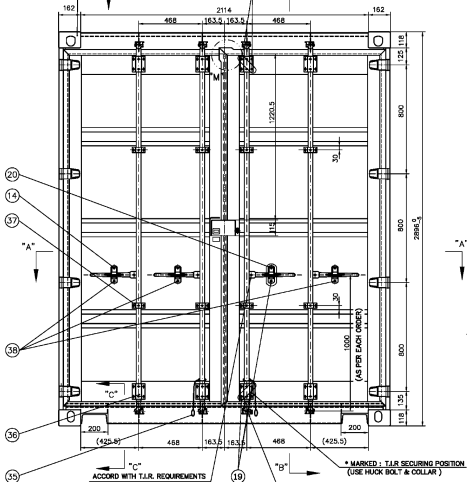
14	FRONT HEADER UPPER	F160130010	SPA-H	1
13	FRONT BOTTOM CORNER COVER PLATE	F150130010	SPA-H	2
12	FRONT BOTTOM CORNER SUPPORT ANGLE	F140130010	SPA-H	2
11	FRONT C.D.P. COVER PLATE	F130140010	SPA-H	2
10	FRONT CORNER DAMAGE PROTECTOR	F120290010	SS41	2
9	FRONT C.D.P. COVER PLATE	F110140010	SPA-H	2
8	FRONT BOTTOM RAIL STIFFENER	F100140010	SPA-H	4
7	FRONT BOTTOM CORNER SUPPORT	F090130010	SPA-H	2
6	FRONT BOTTOM RAIL	F080140010	SPA-H	1
5	FRONT HEADER LOWER	F050130010	SPA-H	1
4	FRONT LASHING BAR	F040244010	SS41(L.Z.P.)	6
3	FRONT PANEL	F030120432	SPA-H	2
2	FRONT CORNER POST	F020160432	SPA-H	2
1	CORNER CASTING	F010800011	SCW49	1 SET
NO.	DESCRIPTION	DWG NO.	M.TL.	QTY.

TITLE: 20' x8' x9'6" FRONT ASSEMBLY

OWNED BY:	CONEX DEPOT INC.	SCALE:	1:20	SIZE:	A3
DESIGNED BY:	WESLEY Apr.01.2015	WEIGHT:	KG.	QTY.:	
CHECKED BY:	PETER Apr.01.2015	DWG No.:	FB01-3000		
APPROVED BY:	WILSON Apr.01.2015				
SHEET	1	OF	1	SHEETS	ISSUE:
					13A-GD



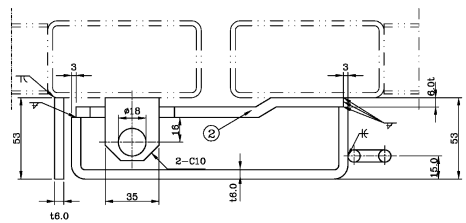
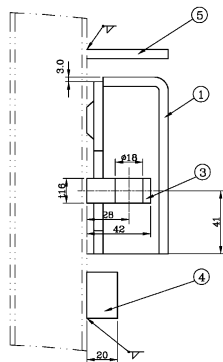
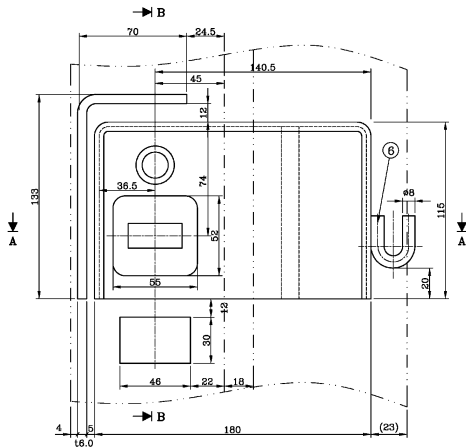
FILCO SHIPPING CONTAINERS



38	BOLT	M10 x 25	SS41(H.D.G.)	3
37	PACKING-BRACKET SMALL	R371235011	E.P.D.M.	8
36	PACKING-BRACKET LARGE	R361230011	E.P.D.M.	8
35	DOOR HOLDER	R051780011	NYLON	2
34	HINGE PIN	R3405A2011	STAINLESS STEEL	8
33	HINGE	R330700011	S29C(E.Z.P.)	8
32	HINGE WASHER GB/T97.1	R061012011	BRASS	8
31	HINGE LUG	R310280011	SS41(E.Z.P.)	16
30	DOOR SILL STIFFENER	R300140010	SPA-H	4
29	REAR CORNER DAMAGE PROTECTOR	R290900020	SS41	2
28	REAR C.D.P. COVER PLATE	R280130010	SPA-H	2
27	REAR BOTTOM CORNER SUPPORT	R270130010	SPA-H	2
26	REAR BOTTOM CORNER SUPPORT	R260130010	SPA-H	2
25	BOTTOM CORNER SPACER	R250160010	SPA-H	2
24	DOOR SILL	R240145010	SPA-H	1
23	DOOR GASKET ASS'Y	R231200411	E.P.D.M.	1 SET
22	BLIND RIVET	#4.8 x 16.6	STAINLESS STEEL(SPH.9MT)	83
21	GASKET RETAINER ASS'Y	R210510411	STAINLESS STEEL	1 SET
20	HUCK BOLT & COLLAR	10X30	S30C AND S90C(H.D.G.)	1
19	HUCK BOLT & COLLAR	10X25	S30C AND S90C(H.D.G.)	5
18	DOOR PANEL	R180120410	SPA-H	2
17	REAR LASHING BAR	R1702A2010	SS41(E.Z.P.)	6
16	SPRING WASHER GB/T93	A10	S9RH32(E.Z.P.)	50
15	NUT GB/T6170	M10	SS41(H.D.G.)	50
14	BOLT	M10 x 30	SS41(H.D.G.)	3
13	BOLT	M10 x 20	SS41(H.D.G.)	44
12	DOOR HORIZONTAL RAIL	R120130010	SPA-H	4
11	DOOR HEADER LOWER	R110140210	SPA-H	1
10	DOOR HEADER STIFFENER	R100140010	SPA-H	4
9	DOOR HEADER UPPER	R090130010	SPA-H	1
8	LOCK BOX OR TRN PLATE	R080130010	SPA-H	1 SET
7	PACKING-HANDLE RETAINER	R071235011	E.P.D.M.	4
6	LOCKING DEVICE ASS'Y	R060632411	H.D.G.	1 SET
5	DOOR VERTICAL RAIL	R050132410	SPA-H	4
4	D.E.M BLOCKING PLATE	R040130010	SPA-H	8
3	REAR CORNER POST INNER	R0304A2410	SMD0YA	2
2	REAR CORNER CASTING	F010800011	SCHW49	1 SET
1	REAR CORNER POST OUTER	R010160410	SPA-H	2
NO	DESCRIPTION	DWG NO.	MT'L	QTY.

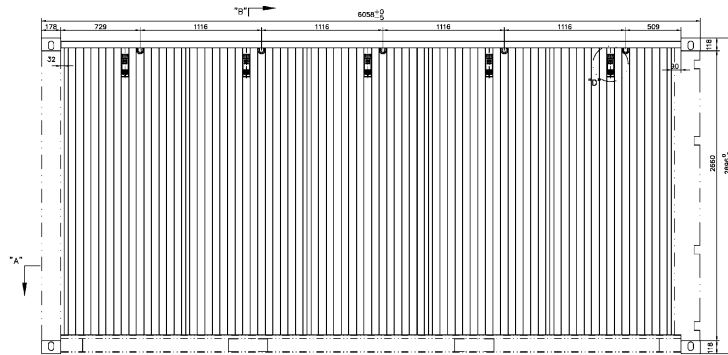
TITLE: 20' x 8' x 9'6" REAR ASSEMBLY

OWNED BY: COMEX DEPOT INC SCALE: 1:20 SIZE: A3
 DESIGNED BY: MESLEY Aug 03,2015 WEIGHT: KG, QTY.:
 CHECKED BY: SVEN Aug 03,2015 DWG No.: FB3H-4000
 APPROVED BY: WILSON Aug 03,2015
 SHEET 1 OF 1 SHEETS ISSUE: 14A-00

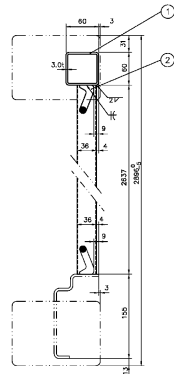


FILCO CONEX DEPOT INC.

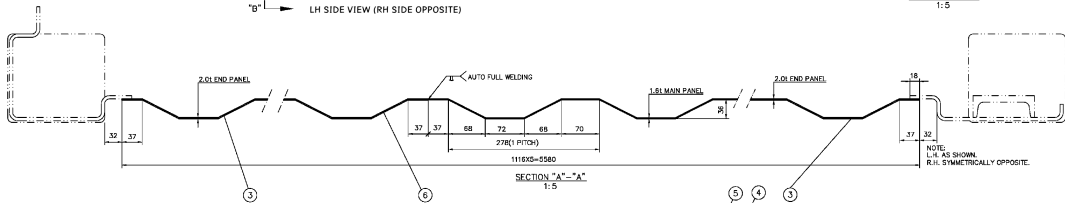
6	HOLDER		SS41	1	Ø8 (E. Z. P.)
5	PLATE 2		SPA-H	1	t6.0
4	PLATE 1		SS41	1	t20
3	LOCK HELD		SS41	1	t11.6
2	BOTTOM PLATE		SPA-H	1	t6.0
1	BOX PLATE		SPA-H	1	t6.0
NO.	ITEM	DWG.NO.	MT'L	QTY	REMARK
TITLE: LOCK BOX					
OWNED BY: CONEX DEPOT INC		SCALE: 1:50	SIZE: A3		
DESIGNED BY:		20141014	WEIGHT: KG	QTY:	
CHECKED BY:			DWG No.: xxx-007020		
APPROVED BY:					
SHEET	1	OF	1	SHEETS	ISSUE: 144-06



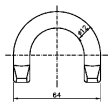
"B" → LH SIDE VIEW (RH SIDE OPPOSITE)



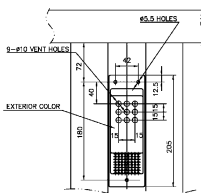
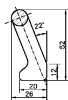
SECTION "B"-"B"
1:5



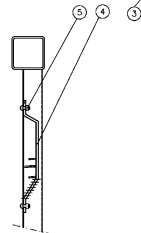
SECTION "A"-"A"
1:5



DETAIL LASHING RING
1:2



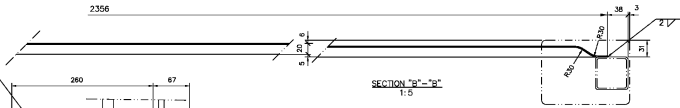
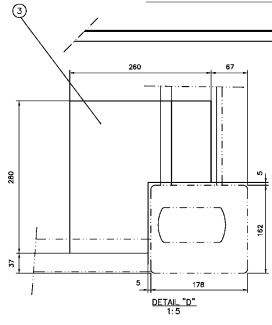
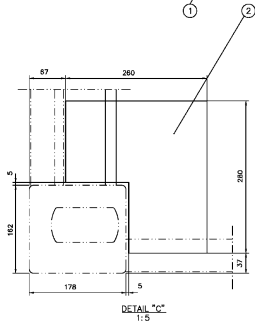
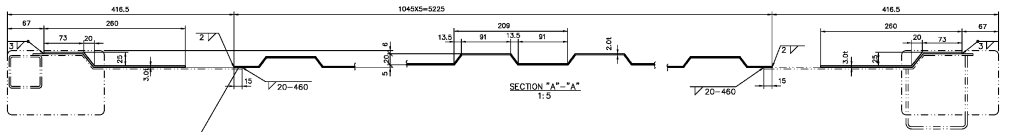
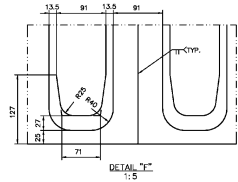
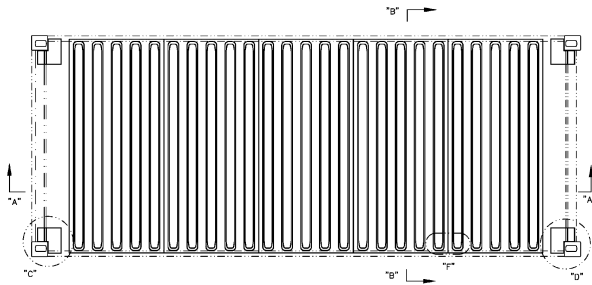
DETAIL D
1:5



NO	DESCRIPTION	DWG NO.	MTL	QTY.
6	MAIN PANEL	S08011841D	SPA-H	3
5	HUCK BOLT	HS X 6A	ALUM	15
4	VENTILATOR	S041100011	A.B.S	5
3	END PANEL (HOLE)	S030120410	SPA-H	2
2	LASHING RING	S0202A2011	SS41(E.Z.P.)	5
1	TOP SIDE RAIL	S01013001D	SPA-H	1

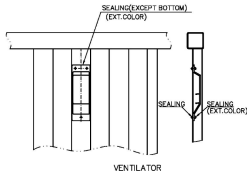
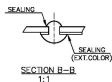
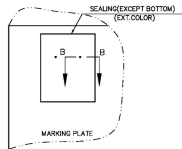
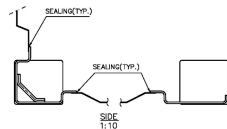
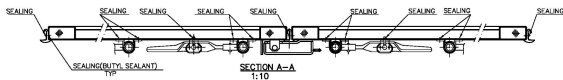
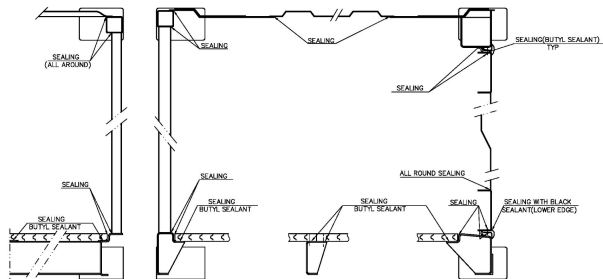
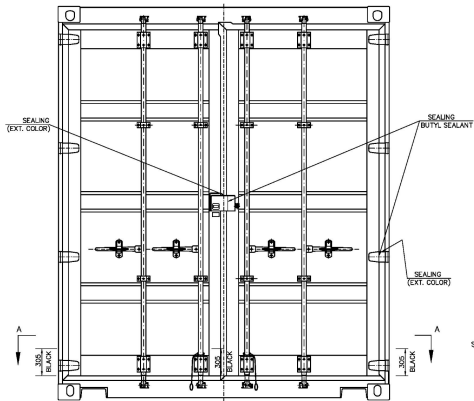
TITLE: 20' x 8' x 9'6" SIDE ASSEMBLY

OWNED BY:	CONLEX DEPOT INC	SCALE:	1:25	SIZE:	A3
DESIGNED BY:	CC Jun.20,2014	WEIGHT:	KG.	QTY.:	
CHECKED BY:	PETER Jun.20,2014	DWG No.:	FXXT-5000		
APPROVED BY:	WLSGN Jun.20,2014				
SHEET	1	OF	1	SHEETS	ISSUE:
					14A-00



FFILCO SHIPPING CONTAINERS

3	REAR REINFORCEMENT PLATE	TD0013001D	SPA-H	2
2	FRONT REINFORCEMENT PLATE	TD0013001D	SPA-H	2
1	ROOF PANEL	TD012001D	SPA-H	5
NO	DESCRIPTION	DWG NO.	MTL	QTY.
TITLE: 20' x 8' x 9'6" ROOF ASSEMBLY				
OWNED BY: CONEX DEPOT INC.		SCALE: 1:30	SIZE: A3	
DESIGNED BY: WESLEY Apr.01.2015		WEIGHT: KG	QTY:	
CHECKED BY: PETER Apr.01.2015		DWG No.: FBKTH-8000		
APPROVED BY: WILSON Apr.01.2015				
SHEET 1	OF 1	SHEETS	ISSUE:	14A-00



NOTE: NOT SPECIFIED ARE WATERBORNE SEALANT OR CHLOROPRENE.

TITLE: 20' x 8' x 9'6" APPLICATION OF SEALANT